



# Fiber Patch Panel\_GPX51

Product Catalogue

## Fiber Patch Panel\_GPX51 Series



### Product Introduction

ADTEK introduces a newly designed high-density optical fiber patch panel, aiming to simplify cable management solutions in data centers. The product features a streamlined structure without the need for complicated sliding trays, making it easier to operate. It incorporates a unique guide rail design, allowing the module box to lock securely upon insertion and easily unlock by pulling the handle, ensuring convenient operation. The rear part offers ample space for additional optical cable storage, while the specially designed anodized silver aluminum alloy front door enhances the visual experience. With its simple structure, user-friendly operation, and modular design, this patch panel significantly saves time and cost for operation and maintenance, making it an ideal choice for high-density cable management solutions in data centers.

### Standards Compliance

TIA/EIA-568-C.3

RoHS Compliant

## Product Features

- High-density design saves space and cost: 1RU/144F(LC), 2RU/288F(LC), 4RU/576F(LC).
- Fits standard 19" rack.
- Streamlined structure without the need for complicated sliding trays
- The rear part offers ample space for additional optical cable storage
- Modular design allows high flexibility and selectivity for future network growth.
- Sandblasted, anodized silver front doors for aesthetics.
- Unique guide rails enable easy cassette lock and release.
- Front and rear doors open for convenient installation.
- Pre-terminated for plug-and-play, reducing deployment and maintenance costs.



## Specification

Fiber Patch Panel_GPX51				
P/N	Rack Spaces	Dimensions (W×D×H),mm	Material	Loaded cassette/adaptor/adaptor plate
GPX51-R106T1	1U	482×541.5×44	SPCC (Body), Powder Coating AL Alloy (Front Door)	Accepts up to 6 GPX51 Series Cassettes
GPX51-R212T1	2U	482×541.5×88	SPCC (Body), Powder Coating AL Alloy (Front Door)	Accepts up to 12 GPX51 Series Cassettes
GPX51-R424T1	4U	482×542.7×176.2	SPCC (Body), Powder Coating AL Alloy (Front Door)	Accepts up to 24 GPX51 Series Cassettes

## Accessories List



M6 Cage Nuts and Screws

CAUTION

Warning Label



Nylon Cable [LxW(mm):150x3]

A1 A2 B1 B2 C1 C2 D1 D2 E1 E2 F1 F2  
G1 G2 H1 H2 I1 I2 J1 J2 L1 L2 M1 M2

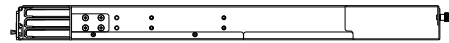
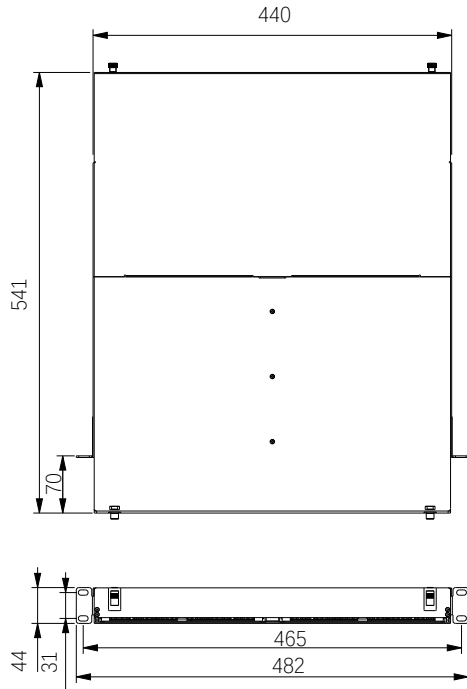
Cassette ID Label



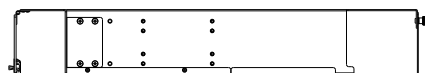
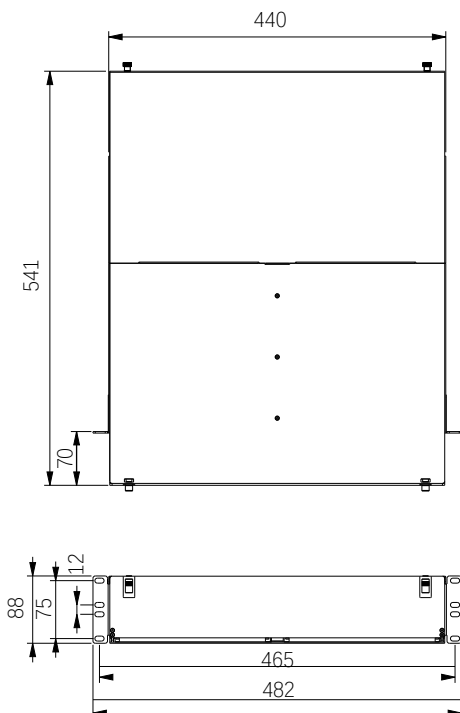
Velcro with Glue [LxW(mm):160x17]

**Product Engineering Drawing**

**GPX51-R106T1**

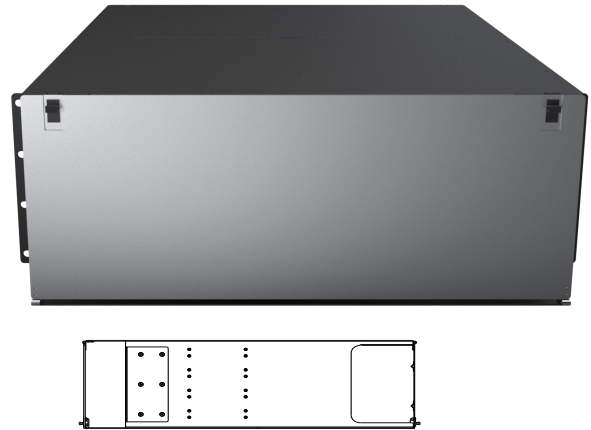
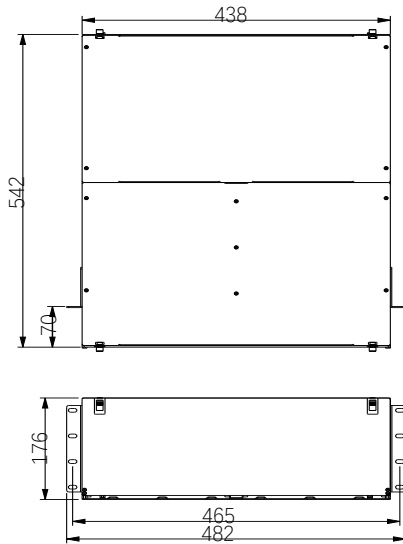


**GPX51-R212T1**



## Product Engineering Drawing

### GPX51-R424T1



## Order Guide

### I . Fiber Patch Panel

<b>GPX51</b>	—	<b>R1</b>
		<b>Height</b>
		R1: 1U
		R2: 2U
		R4: 4U



GPX51-R1(Loaded with Cassettes) Door Opened



GPX51 Cassettes Pull Out View

## II. GPX51 Cassettes

- Versatile configurations cater to different application scenarios, including MPO fanout, fusion splice, and pass-through.
- Compatible with 8F, 12F, and 24F MPO/MTP connectors.
- Convenient ID labels for easy and quick identification.

### i . GPX51-SP

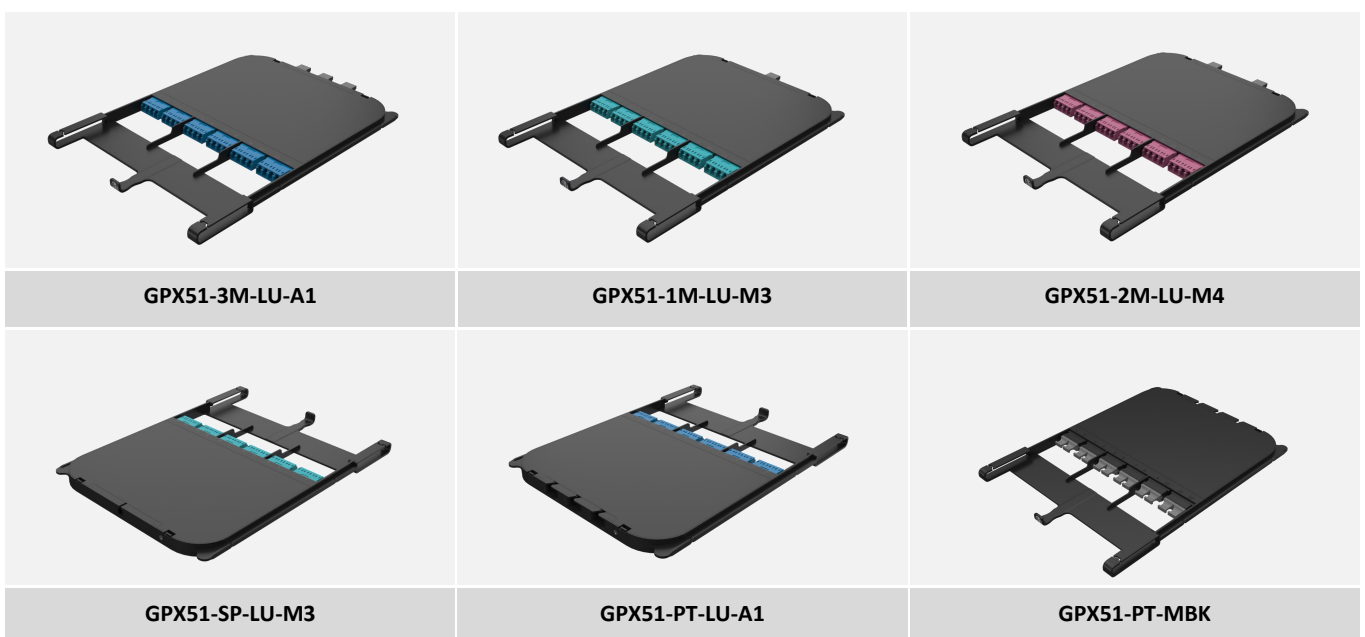
—	LU	—	A1	—	S
	<b>Connector type</b>		<b>Fiber mode</b>		<b>Grade</b>
	LU: LC/UPC LA: LC/APC MBK: MPO/Black (Up-Down) MGY: MPO/Grey (Up-Up) M16BK: MPO-16/Black (Up-Down)		A1: G.657.A1 M3: OM3 M4: OM4		S: Standard loss E: Elite loss

<b>GPX51-SP</b>	GPX51 Splicing Cassette, 6×LC Quad Adapter (Flangeless) , 12F 0.9 Fiber Optic Pigtail 1M
<b>GPX51-PT</b>	GPX51 Pass Thru Cassette, 6×LC Quad Adapter (Flangeless) or 6×MPO Duplex Adapter(Flangeless)

### ii. GPX51-1M

—	LU	—	A1	—	S	—	B
	<b>Connector type</b>		<b>Fiber mode</b>		<b>Grade</b>		<b>Method</b>
	LU: LC/UPC LA: LC/APC		A1: G.657.A1 M3: OM3 M4: OM4		S: Standard loss E: Elite loss		A: Type A B: Universal B C: Type C

<b>GPX51-1M</b>	GPX51 Patch Cassette, 1×MPO Adapter - 6×LC Quad Adapter (Flangeless) , 1×MPO(Male) 24F Cable
<b>GPX51-2M</b>	GPX51 Patch Cassette, 2×MPO Adapter - 6×LC Quad Adapter (Flangeless) , 2×MPO(Male) 12F Cable
<b>GPX51-3M</b>	GPX51 Patch Cassette, 3×MPO Adapter - 6×LC Quad Adapter (Flangeless) , 3×MPO(Male) 8F Cable



**Note:**

- MPO Connector (Single Mode): APC as default
- Polarity is managed inside of the cassette
- MTP® brand is available

## Polarity

In any installation, it is important to ensure that the transmitter at one end matches the corresponding receiver at the other end. ADTEK provides a number of intelligent solutions that can help you manage and optimize your network and its connectivity.

### I. MPO -8 , Universal B

<b>Port</b>	1	2	3	4	*	*	*	*	5	6	7	8
<b>Inner Sequence</b>	Blue	Aqua	Orange	Pink	*	*	*	*	Green	Violet	Brown	Yellow

### II. MPO -12, Type A

<b>Port</b>	1	2	3	4	5	6	7	8	9	10	11	12
<b>Inner Sequence</b>	Blue	Orange	Green	Brown	Grey	White	Red	Black	Yellow	Violet	Pink	Aqua

### III. MPO -12, Universal B

<b>Port</b>	1	2	3	4	5	6	7	8	9	10	11	12
<b>Inner Sequence</b>	Blue	Aqua	Orange	Pink	Green	Violet	Brown	Yellow	Grey	Black	White	Red

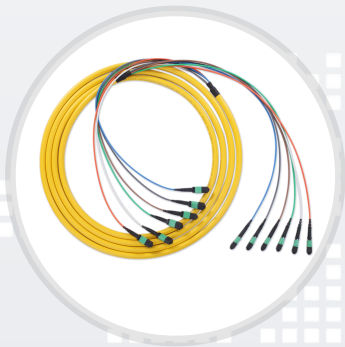
### IV.MPO -24 , Type C

<b>Port</b>	1	2	3	4	5	6	7	8	9	10	11	12
<b>Inner Sequence</b>	Blue	Blue	Orange	Orange	Green	Green	Brown	Brown	Grey	Grey	White	White
<b>Port</b>	13	14	15	16	17	18	19	20	21	22	23	24
<b>Inner Sequence</b>	Red	Red	Black	Black	Yellow	Yellow	Violet	Violet	Pink	Pink	Aqua	Aqua

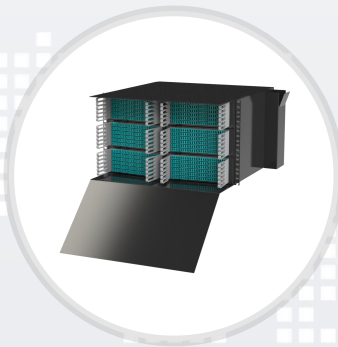
## About ADTEK



Established in 2007, Shenzhen ADTEK Technology Co., Ltd. is a national high-tech enterprise integrating R&D, production and sales. As a leading optical connectivity equipment provider, ADTEK has more than 15 years of design and manufacturing experience and has expanded its business to more than 70 countries and regions. The company focuses on providing optical connectivity products for global customers, providing customized fiber optic connectivity products for domestic and international carriers, cloud service providers, main equipment vendors, and system integrators. Our main products include passive optical components, fiber management system, WDM, ODN intelligent devices and a series of other products. The company has passed the ISO9001:2015 quality system certification, ISO14001:2015 environmental management system certification and ISO45001:2018 occupational health and safety management system certification. The company takes "quality is life" as the tenet, and the products have passed CE, RoHS, UL/ETL, CPR and other certifications to ensure the reliability and stability of each product and provide excellent service for our customers.



Fiber Optic Patch Cord



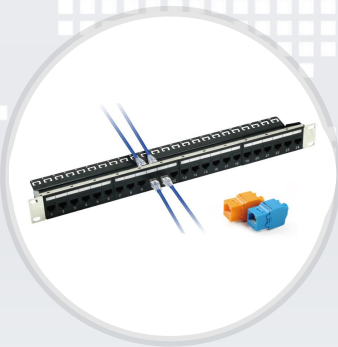
Fiber Optic Patch Panel



Waterproof Series Products



WDM



Copper Cable Connection Products



Data Center Cabinet



Please refer to our website for details. <https://www.adtek-fiber.com>







**SHENZHEN ADTEK TECHNOLOGY CO., LIMITED**

Tel: 0086-0755-83545255

E-mail: [marketing@adtek-fiber.com](mailto:marketing@adtek-fiber.com)

Address: 16/F, Building 1, Nanshan iPark Chongwen, No.3370 Liuxian Avenue, Nanshan District, Shenzhen, China